

ZORYVE[®]
(roflumilast) cream 0.3%

FOR PLAQUE PSORIASIS
AGE **6+**

THE STEROID-FREE
TOPICAL THAT
CAN HELP CLEAR
PLAQUE PSORIASIS
EVERYWHERE

ZORYVE
THE CREAM THAT
CAN

Ask your healthcare provider if
ZORYVE may be right for you

Plaques illustrated. Not an actual patient.

ZORYVE is for use on the skin only. Do not use ZORYVE in or on your eyes, mouth, or vagina.

✓ APPROVED USE

ZORYVE cream is a prescription medicine used on the skin (topical), including in areas with skin folds, to treat plaque psoriasis in people 6 years of age and older.

It is not known if ZORYVE cream is safe and effective in children under 6 years of age.

Please see **IMPORTANT SAFETY INFORMATION** throughout.

PLAQUE PSORIASIS CAN OCCUR ANYWHERE

Plaque psoriasis impacts **NEARLY 9 MILLION PEOPLE** IN THE US

9M

Which body areas might be affected?

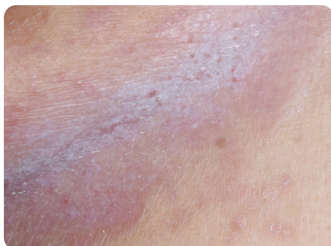
Plaque psoriasis often appears in more than one skin area, including:

Body and limbs
including arms and elbows, legs and knees, and torso



Elbow

Skin folds
like armpits, under breasts, and between buttocks



Under breast

Sensitive areas
such as the face and genitals



Face

How might your body be affected?

Signs and symptoms can include:



Raised plaques and scales



Itching, stinging, and burning



Cracking and pain

What triggers plaque psoriasis?

Common triggers, which vary from person to person, include:

- **Stress**—emotional stress can trigger symptoms
- **Injury to skin**—such as abrasions, insect bites, and burns
- **Illness**—such as upper respiratory infections that affect the immune system
- **Weather**—particularly cold weather, minimal sunlight, and low humidity
- **Diet**—certain foods and nutrients, as well as alcohol and smoking



DID YOU KNOW? Psoriasis in sensitive and skin fold areas is quite common; 2 out of 3 people will develop psoriasis on their genitals at some point. If you have symptoms in these areas, talk to your healthcare provider about the best treatment options for you.

ZORYVE (rhymes with “BELIEVE”) **CAN HELP CLEAR PLAQUES AND RELIEVE ITCH**

ZORYVE
THE CREAM THAT
CAN

Plaques illustrated. Not an actual patient.

RAPID RELIEF EVERYWHERE

ZORYVE is a once-daily, steroid-free topical cream. ZORYVE was studied in two clinical trials, with 576 people treated with ZORYVE, and 305 people treated with vehicle (a cream not containing the active ingredient) for 8 weeks across affected areas on the skin.

How fast and effective was ZORYVE in clearing plaques **ACROSS BODY AREAS**?

~40%

~40% of people achieved significantly clearer skin after 8 weeks of using ZORYVE vs 6% of people using vehicle.

- 20% saw results as early as 4 weeks vs 4% using vehicle

How fast and effective was ZORYVE in clearing plaques in people with psoriasis **IN SKIN FOLDS**?

70%

70% of 116 people with psoriasis in skin folds achieved significantly clearer skin in these areas at 8 weeks vs 16% of 63 people using vehicle.

- 33% saw results as early as 2 weeks vs 10% using vehicle
- 48% saw results as early as 4 weeks vs 22% using vehicle

Results may vary.

When did people experience significant **ITCH RELIEF**?

68%

68% of 447 people had significant itch relief at 8 weeks vs 30% of 231 people using vehicle.

- 38% saw results as early as 2 weeks vs 22% using vehicle
- 53% saw results as early as 4 weeks vs 20% using vehicle

Are there limitations on how long I can use ZORYVE?

ZORYVE is steroid-free and designed to be used every day and for as long as you need to. Talk to your doctor about whether ZORYVE is right for you.

Did people stop using ZORYVE because of side effects?

1% of people stopped using ZORYVE due to a side effect after 8 weeks vs 1.3% of people using vehicle.

IMPORTANT SAFETY INFORMATION

ZORYVE is for use on the skin (topical only). Do not use ZORYVE in or on your eyes, mouth, or vagina. **Do not use ZORYVE** if you have certain liver problems.

Please see additional IMPORTANT SAFETY INFORMATION throughout.

ZORYVE®
(roflumilast) cream 0.3%

STEROID-FREE ZORYVE **CAN** HELP CLEAR YOUR PLAQUE PSORIASIS

Significant results seen as
early as 2 or 4 weeks with
ZORYVE once-daily

BEFORE TREATMENT

AFTER TREATMENT

ELBOW



KNEE



ARMPIT



Actual clinical trial patients

IMPORTANT SAFETY INFORMATION (CONT'D)

Tell your healthcare provider about the medicines
you take, including prescription and over-the-counter
medicines, vitamins, and herbal supplements.

Please see additional **IMPORTANT SAFETY
INFORMATION** throughout.

ZORYVE[®]
(roflumilast) cream 0.3%

DARYL CAN WITH ZORYVE



"Right away I noticed a difference using it on my skin. ZORYVE wasn't oily and greasy—it was easy to apply."

Actual clinical trial participant. Results may vary.

DARYL USED ZORYVE TO HELP RELIEVE HIS PLAQUE PSORIASIS

Daryl was diagnosed with plaque psoriasis at 10 years old. By his thirties, his psoriasis had spread to his arms, shins, back, shoulders, and chest. He spoke with his dermatologist and asked to join the clinical trial for ZORYVE.

SEE SUCCESS STORY

Scan to watch Daryl's
success story or visit
[ZORYVE.com](https://www.zoryve.com) now



USE PHONE CAMERA

IMPORTANT SAFETY INFORMATION (CONT'D)

Before using ZORYVE, tell your healthcare provider about all of your medical conditions, including if you:

- have liver problems.
- are pregnant or plan to become pregnant. It is not known if ZORYVE will harm your unborn baby.
- are breastfeeding or plan to breastfeed. It is not known if ZORYVE passes into your breast milk. Talk to your healthcare provider about the best way to feed your baby during treatment with ZORYVE. Breastfeeding women using ZORYVE should use it on the smallest area of the skin and for the shortest time needed. Do not apply ZORYVE directly to the nipple or areola to avoid contact with your baby.

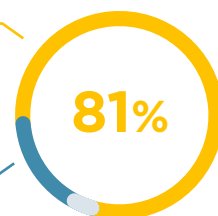
Please see additional IMPORTANT SAFETY INFORMATION throughout.

REVIEWS FROM PATIENTS WHO HAVE USED ZORYVE

112 people with plaque psoriasis were identified by their healthcare professional to sample once-daily ZORYVE for 30 days and share their experience*

81% OF PEOPLE
said they would continue
using ZORYVE if prescribed

AN ADDITIONAL 15%
said they would consider
continuing to use ZORYVE
if prescribed



The top 5 features people liked about ZORYVE:

- | | |
|-----------------------------|----------------|
| ✓ Improvement in plaques | ✓ Itch relief |
| ✓ Once-daily dosing | ✓ Steroid-free |
| ✓ One product for all areas | |

People were asked to identify what they liked most about ZORYVE from a list of 7 product features. Additional features that patients liked were ease of application and cream feel and consistency.

*Those surveyed via SMS received nominal compensation for completing the survey.

ZORYVE®
(roflumilast) cream 0.3%

ZORYVE **CAN** EASILY FIT INTO YOUR DAY

- ✓ Steroid-free, once-daily cream
- ✓ Safe for long-term use
- ✓ Goes on easily with nearly no burning or stinging (3 out of 562 people with ZORYVE vs 1 out of 301 people with vehicle)
- ✓ Unique formulation:
 - Non-greasy
 - Spreads easily
 - Absorbs quickly
 - Leaves no residue
 - Fragrance-free
 - Vegan
 - Gluten-free

Where can I apply ZORYVE cream?

Wherever you have plaque psoriasis. ZORYVE can be used anywhere on the skin—even on sensitive areas like the face, in skin folds, or on the genitals. Do not use ZORYVE in or on your eyes, mouth, or vagina.



Ask your healthcare provider if ZORYVE may be right for you.

How should I apply ZORYVE?



Apply ZORYVE to the affected areas once a day.



Rub the cream in completely until you no longer see it on your skin—then get on with your day!



Wash your hands after unless hands are being treated.

If someone else applies ZORYVE for you, they should wash their hands after applying ZORYVE.

When should I apply once-daily ZORYVE?

Whenever you like. You only need to apply ZORYVE once a day. Choose a time that is easy to remember, such as before bed or first thing in the morning.

IMPORTANT SAFETY INFORMATION (CONT'D)

The most common side effects of ZORYVE include:

- diarrhea
- headache
- trouble sleeping
- nausea
- application site pain
- upper respiratory tract infections
- urinary tract infections (UTIs)

These are not all of the possible side effects of ZORYVE. Call your healthcare provider for medical advice about side effects. You are encouraged to report side effects to FDA at [1-800-FDA-1088](https://www.fda.gov/medwatch).

Please see additional IMPORTANT SAFETY INFORMATION throughout.

Please see Patient Information for ZORYVE.

Z ZORYVE
THE CREAM THAT
CAN

MAKE YOUR MOVE
TOWARD A CLEARER
TOMORROW

Plaques illustrated. Not an actual patient.

The **ZORYVE Direct Savings Card** can help with out-of-pocket cost for patients with private drug[†] insurance.



Scan to get the
Savings Card or visit
ZORYVE.com/Direct

To enroll using your
mobile device, text
SAVE to **440-4ZORYVE**
[\(440-496-7983\)](tel:440-496-7983)

If you don't have insurance or don't have enough insurance, the Arcutis Cares™ patient assistance program provides Arcutis medication at no cost to eligible patients in financial need.[§]

For program and application information, visit arcutiscares.com.



Arcutis Cares™

See what ZORYVE can do at ZORYVE.com

[†]Subject to eligibility criteria and maximum program limitation. This offer is not valid for patients without commercial drug insurance or whose prescription claims are eligible to be reimbursed, in whole or in part, by any government program. Terms and Conditions may be viewed online at www.zoryvedirect.com/terms.

[§]Subject to financial eligibility requirements. Other terms and restrictions apply.

